

# Chatham-Summit Quaker Meeting Facility Rental Information



The original Chatham-Summit Quaker meetinghouse was built in 1970 and designed by the renowned Philadelphia Quaker architect H. Mather Lippincott. It was modestly renovated and expanded in 2007 but has preserved the simplicity and serenity of its original layout and interior. We've added a two-story addition to accommodate a new library and classroom, a new heating system, an ADA-approved bathroom and many finishing touches.



## Location

The facility is conveniently located at 158 Southern Blvd, Chatham, NJ, within walking distance of the Great Swamp Outdoor Education Center. With more than 3,800 square feet of bright and comfortable space, our building is nestled in a tranquil, woody landscape.

## Availability

Our meetinghouse is available to the wider community for charitable, educational and otherwise socially responsible activities. Our space also can be rented for private affairs such as weddings. We encourage its use by individuals and groups whose purpose and mission resonate with the values and goals of Friends. Rental decisions are made on a case-by-case basis to balance the interests of our members and the groups using the space.

## Spaces

The meetinghouse is made up of simple, light-filled, individually climate-controlled spaces which are pleasant and versatile. In keeping with Quaker tradition, our building is largely free of religious symbols and icons thus lending itself to use by other sectarian as well as secular organizations. It is wheelchair accessible with an ADA-approved bathroom on the first-floor level. Rentals can be tailored to one or more rooms, depending on a group's needs. Wi-fi access is available in all indoor meeting spaces.

## Main room



The building's main space is a large, serene meeting room measuring 36' by 36' with carpeting, cushioned benches and tall windows looking out on a natural garden and woods (deer can often be seen visiting the grounds). This space is beautiful in all seasons of the year. Although the shape of the room is square, with benches normally arranged in the round, the benches can be re-arranged or pushed back to suit the needs of the renter. The room is acoustically suited for music appropriate for the occasion. The combined assets of the room create a surprisingly intimate environment for groups of any size, large or small.  
*Capacity: 150 people.*

## All-purpose room

This large, well-lit room, which contains a piano, measures 16' by 48' and can be divided into two separate spaces. It adjoins the Library at one end which can either be incorporated into the all-purpose room to increase usable space or remain separate. Also adjoining this room at the opposite end from the Library is a well-appointed kitchen. A large number of folding banquet tables and chairs are available to set up as needed, seating about 80 people. This room has every-thing needed for a luncheon, wedding, reception, or meeting space. This space can be rented as a whole or subdivided for a smaller occasion.

## Kitchen



This bright, freshly painted space, measuring 10' by 14', is conveniently located near the entrance and the adjoining all-purpose room. Its amenities include a stove, oven, microwave, refrigerator, coffee pot, dishwasher and two-basin sink for easy cleanup; a pass-through allows easy service to the all-purpose room. It is available at a modest additional fee by prior arrangement along with the rental of any part of the meetinghouse, on a first-come, first-served basis.

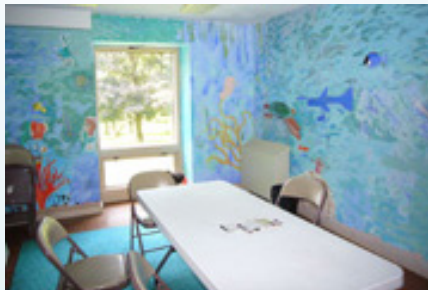
## Library



This pleasant, book-lined space, measuring 16' by 20', has large windows and a boardroom-style table and chairs — an ideal area for a discussion group or meeting with seating for about 15 people.

## Classrooms

Downstairs, a central hallway opens into four smaller rooms of varying sizes, each of which can be used for classrooms and discussion groups; each has separate zoned heating. There are two bathrooms off the hallway and another off the “nursery” classroom. This room contains a sink and counter space.



## Memorial Garden



To the northeast of the main meeting room lies a small memorial garden which can be enjoyed by viewing through the windows of the main room or by walking the garden's paths. The garden is surrounded by undisturbed woods which provide a peaceful environment for reflection.

## Restrooms

The meetinghouse has five restrooms; three downstairs and two on the main floor, including a centrally located wheelchair-accessible restroom between the main room and all-purpose room.

## Parking

Rental of any part of the facility includes use of the meeting house's 52-space parking lot with the understanding that other groups which may be using the facility at the same time may also be using this lot.



## Restrictions

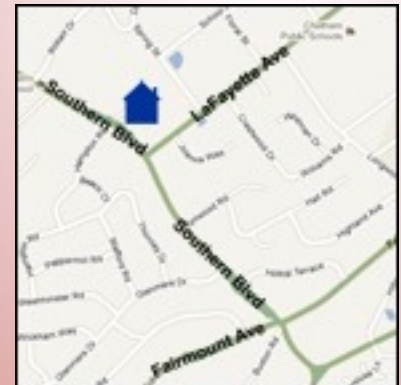
The use of alcohol and illegal drugs is prohibited anywhere on the property. Smoking is not permitted in the building.

## Make your rental arrangements in three easy steps:

- **Contact the Rental Coordinator** by calling (973) 635-2161 or sending email to [rentals@chathamquakers.org](mailto:rentals@chathamquakers.org). Tell us your preferred date and the number of people so that we can check availability. A list of rental fees is available on our Web site.
- **Visit the property.** If you have not rented space at the Chatham-Summit meetinghouse before, please plan a visit with the Rental Coordinator or other appropriate person to see the space and learn more about its amenities and systems (heat, light, kitchen). Before you rent the space, we'll provide you with a rental fee schedule, guidelines for use of the property (both available on our website), a checklist for opening and closing the building, and the name and numbers of a meetinghouse contact in case of questions or problems.

## Questions?

Call (973) 635-2161 or email [rentals@chathamquakers.org](mailto:rentals@chathamquakers.org)



Chatham-Summit Quaker Meeting  
158 Southern Blvd  
Chatham Twp, NJ 07928  
[www.chathamquakers.org](http://www.chathamquakers.org)